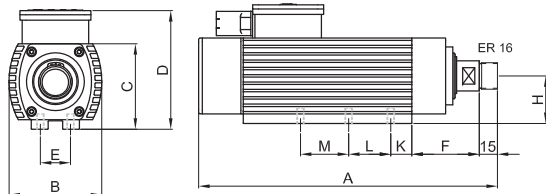
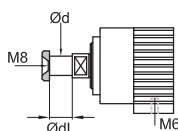


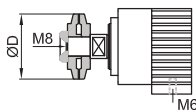
ARFM.1Y SPINDLES



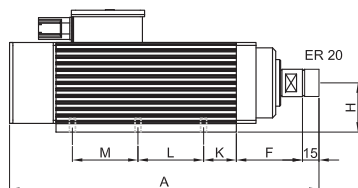
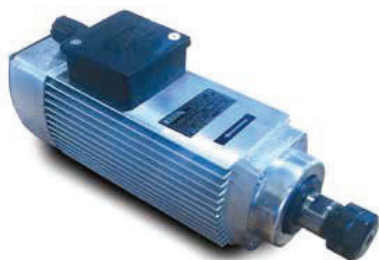
TYPE	A mm	B mm	C mm	D mm	E mm	F mm	H mm	K mm	L mm	M mm	Ød mm	ØD mm	ØdL mm
ARFM.1Y-S	198	77	71	98	25	56	39,5	17,5	55	-	16	54	19
ARFM.1Y-M	248	77	71	98	25	56	39,5	17,5	55	35	16	54	55



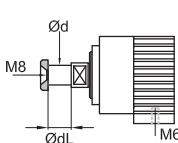
TYPE	KW / HP	Rpm	Hz.	Volt	Amper	Kg.	COLLETS
ARFM.1Y-S2	0,18 / 0,25	12.000	200	220V - 3~	0,8	2,10	ER 11 1 - 7 mm
ARFM.1Y-S3	0,25 / 0,34	18.000	300	220V - 3~	1,1	2,10	ER 16 1 - 10 mm
ARFM.1Y-M2	0,37 / 0,5	12.000	200	220V - 3~	1,6	3,10	
ARFM.1Y-M3	0,55 / 0,75	18.000	300	220V - 3~	2,2	2,10	
ARFM.1Y-M4	0,75 / 1	24.000	400	220V - 3~	2,6	2,10	



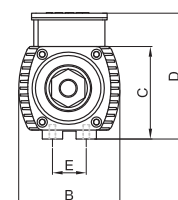
ARFM.2Y SPINDLES



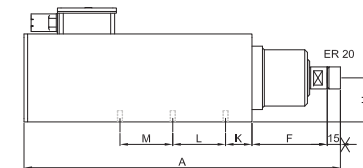
TYPE	A mm	B mm	C mm	D mm	E mm	F mm	H mm	K mm	L mm	M mm	Ød mm	ØdL mm
ARFM.2Y-S	236	89,6	82	112	30	60,5	45	30	60	-	20	25
ARFM.2Y-M	286	89,6	82	112	30	60,5	45	30	60	-	20	25
ARFM.2Y-L	336	89,6	82	112	30	60,5	45	30	60	60	20	25



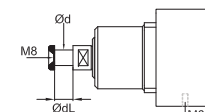
TYPE	KW / HP	Rpm	Hz.	Volt	Amper	Kg.	COLLETS
ARFM.2Y-S2	0,5 / 0,68	12.000	200	220V - 3~	1,8	3,80	ER 16 1 - 10 mm
ARFM.2Y-S3	0,75 / 1	18.000	300	220V - 3~	2,6	3,80	
ARFM.2Y-M2	0,9 / 1,2	12.000	200	220V - 3~	3	4,95	
ARFM.2Y-M3	1,4 / 1,9	18.000	300	220V - 3~	4,6	4,95	
ARFM.2Y-M4	0,18 / 0,25	3.000	50	380V - 3~	0,35	4,95	ER 20 1 - 13 mm
ARFM.2Y-L2	1,3 / 1,75	12.000	200	220V - 3~	4,25	6,35	
ARFM.2Y-L3	2 / 2,65	18.000	300	220V - 3~	6,7	6,35	
ARFM.2Y-L4	0,37 / 0,5	3.000	50	380V - 3~	0,8	6,35	



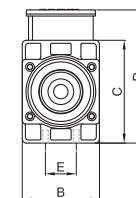
ARFM.2K SPINDLES



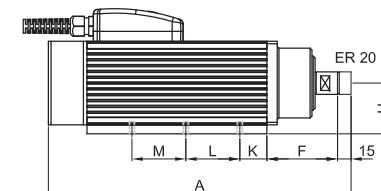
TYPE	A mm	B mm	C mm	D mm	E mm	F mm	H mm	K mm	L mm	M mm	Ød mm	ØdL mm
ARFM.2K-S	259,5	75	100	130	30	85,5	50	30	60	-	20	25
ARFM.2K-M	309,5	75	100	130	30	85,5	50	30	60	-	20	25
ARFM.2K-L	359,5	75	100	130	30	85,5	50	30	60	60	20	25



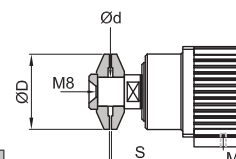
TYPE	KW / HP	Rpm	Hz.	Volt	Amper	Kg.	COLLETS
ARFM.2K-S2	0,5 / 0,68	12.000	200	220V - 3~	1,8	3,80	ER 16 1 - 10 mm
ARFM.2K-S3	0,75 / 1	18.000	300	220V - 3~	2,6	3,80	
ARFM.2K-M2	0,9 / 1,2	12.000	200	220V - 3~	1,6	5,50	
ARFM.2K-M3	1,4 / 1,9	18.000	300	220V - 3~	4,6	5,50	
ARFM.2K-M4	0,18 / 0,25	3.000	50	380V - 3~	0,35	5,50	ER 20 1 - 13 mm
ARFM.2K-L2	1,3 / 1,75	12.000	200	220V - 3~	4,25	7,20	
ARFM.2K-L3	2 / 2,65	18.000	300	220V - 3~	6,7	7,20	
ARFM.2K-L4	0,37 / 0,5	3.000	50	380V - 3~	0,8	7,20	



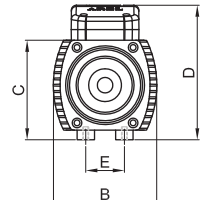
ARFM.3Y SPINDLES



TYPE	A mm	B mm	C mm	D mm	E mm	F mm	H mm	K mm	L mm	M mm	Ød mm	ØdL mm	S mm
ARFM.3Y-S	287	107	103	138	40	80	56,5	30	60	-	78	30	2
ARFM.3Y-M	337	107	103	138	40	80	56,5	30	60	60	78	30	2
ARFM.3Y-L	377	107	103	138	40	80	56,5	30	60	60	78	30	2

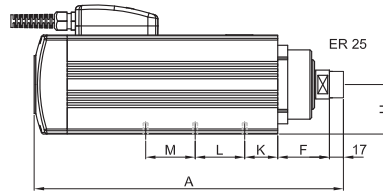


TYPE	KW / HP	Rpm	Hz.	Volt	Amper	Kg.	COLLETS
ARFM.3Y-S2	1,5 / 2	12.000	200	Δ 220-380 Y	5,3 / 3,1	6,85	ER 20 1 - 13 mm
ARFM.3Y-S3	2,2 / 3	18.000	300	Δ 220-380 Y	8 / 4,6	6,85	
ARFM.3Y-S4	0,37 / 0,5	3.000	50	Δ 220-380 Y	1,4 / 0,8	6,85	
ARFM.3Y-M2	2,2 / 3	12.000	200	Δ 220-380 Y	8 / 4,6	9	
ARFM.3Y-M3	3 / 4	18.000	300	Δ 220-380 Y	10,5 / 6	9	ER 25 1 - 16 mm
ARFM.3Y-M4	0,55 / 0,75	3.000	50	Δ 220-380 Y	1,1 / 1,9	9	
ARFM.3Y-L1	1,5 / 2	6.000	200	Δ 220-380 Y	5,3 / 3,1	10,85	
ARFM.3Y-L2	3 / 4	12.000	200	Δ 220-380 Y	10,4 / 6	10,85	
ARFM.3Y-L3	4 / 5,5	18.000	300	Δ 220-380 Y	14,2 / 8,2	10,85	ER 25 1 - 16 mm
ARFM.3Y-L4	0,75 / 1	3.000	50	Δ 220-380 Y	2,6 / 1,6	10,85	





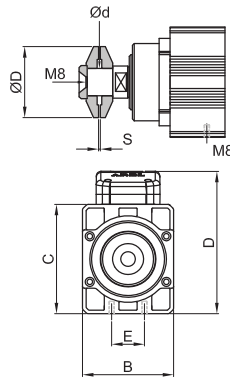
ARFM.3K SPINDLES



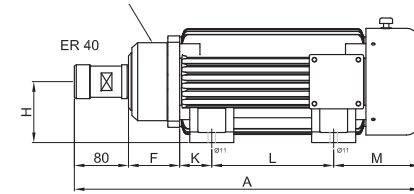
Possible to produce with electric fan or liquid cooled as optional.

TYPE	A mm	B mm	C mm	D mm	E mm	F mm	H mm	K mm	L mm	M mm	Ød mm	ØdL mm	S mm
ARFM.3K-S	285	100	120	156	36	62	60	40	60	-	78	30	2
ARFM.3K-M	335	100	120	156	36	62	60	40	60	60	78	30	2
ARFM.3K-L	375	100	120	156	36	62	60	40	60	60	78	30	2

TYPE	KW / HP	Rpm	H _z	Volt	Amper	Kg.	COLLETS
ARFM.3K-S2	1,5 / 2	12.000	200	Δ 220-380 Y	5,3 / 3,1	8,75	ER 20 1 - 13 mm
ARFM.3K-S3	2,2 / 3	18.000	300	Δ 220-380 Y	8 / 4,6	8,75	
ARFM.3K-S4	0,37 / 0,5	3.000	50	Δ 220-380 Y	1,4 / 0,8	8,75	
ARFM.3K-M2	2,2 / 3	12.000	200	Δ 220-380 Y	8 / 4,6	11	
ARFM.3K-M3	3 / 4	18.000	300	Δ 220-380 Y	10,5 / 6	11	ER 25 1 - 16 mm
ARFM.3K-M4	0,55 / 0,75	3.000	50	Δ 220-380 Y	1,1 / 1,9	11	
ARFM.3K-L1	1,5 / 2	6.000	200	Δ 220-380 Y	5,3 / 3,1	12,8	
ARFM.3K-L2	3 / 4	12.000	200	Δ 220-380 Y	10,4 / 6	12,8	
ARFM.3K-L3	4 / 5,5	18.000	300	Δ 220-380 Y	14,2 / 8,2	12,8	
ARFM.3K-L4	0,75 / 1	3.000	50	Δ 220-380 Y	2,6 / 1,6	12,8	

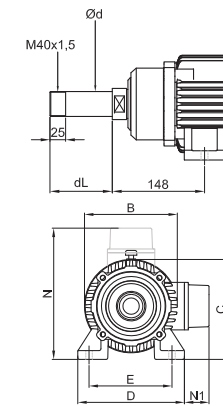


ARFM.5Y SPINDLES

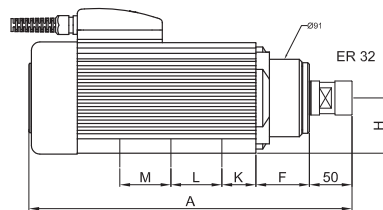


TYPE	A mm	B mm	C mm	D mm	E mm	F mm	H mm	K mm	L mm	M mm	N mm	N 1 mm	Ød mm	dL mm
ARFM.5Y-M	455	156	168	-	95	75	83,5	35	150	115	210	-	40	100
ARFM.5Y-L	510	156	168	176	140	75	90	47,4	180	127	-	47	40	100

TYPE	KW / HP	Rpm	H _z	Volt	Amper	Kg.	COLLETS
ARFM.5Y-M1	4 / 5,5	6.000	200	Δ 220-380 Y	14 / 8,2	29,5	ER 32 1 - 20 mm
ARFM.5Y-M2	6 / 8	12.000	400	380 Δ	13	29,5	
ARFM.5Y-M4	2,2 / 3	3.000	50	Δ 220-380 Y	7,8 / 4,5	29,5	ER 40 2 - 26 mm
ARFM.5Y-L1	6 / 8	6.000	200	Δ 220-380 Y	22,5 / 13	41	
ARFM.5Y-L2	9 / 12	12.000	400	380 Δ	17	41	
ARFM.5Y-L4	3,7 / 5	3.000	50	Δ 220-380 Y	12 / 7	41	

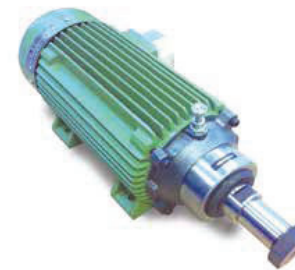
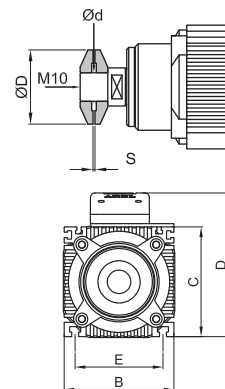


ARFM.4K SPINDLES

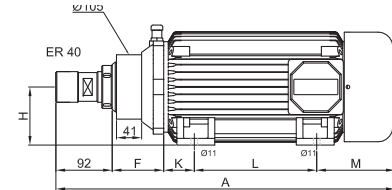


TYPE	A mm	B mm	C mm	D mm	E mm	F mm	H mm	K mm	L mm	M mm	Ød mm	ØdL mm	S mm
ARFM.4K-S	330	130	130	170	104	63	65	M6 T KANAL / T SLOT	78	30	2		
ARFM.4K-M	380	130	130	170	104	63	65	M6 T KANAL / T SLOT	78	30	2		
ARFM.4K-L	420	130	130	170	104	63	65	M6 T KANAL / T SLOT	78	30	2		

TYPE	KW / HP	Rpm	H _z	Volt	Amper	Kg.	COLLETS
ARFM.4K-S1	2 / 2,65	6.000	200	Δ 220-380 Y	7 / 4	13,5	ER 20 1 - 13 mm
ARFM.4K-S2	3 / 4	12.000	200	Δ 220-380 Y	10,4 / 6	13,5	
ARFM.4K-S3	4 / 5,5	18.000	300	Δ 220-380 Y	14 / 8,2	13,5	
ARFM.4K-S4	1,1 / 1,5	3.000	50	Δ 220-380 Y	3,8 / 2,2	13,5	
ARFM.4K-M1	3 / 4	6.000	200	Δ 220-380 Y	10,4 / 6	17,5	ER 25 1 - 16 mm
ARFM.4K-M2	4 / 5,5	12.000	200	Δ 220-380 Y	14 / 8,2	17,5	
ARFM.4K-M3	5,5 / 7,5	18.000	300	Δ 220-380 Y	21 / 12	17,5	
ARFM.4K-M4	1,5 / 2	3.000	50	Δ 220-380 Y	6 / 3,5	17,5	
ARFM.4K-L1	4 / 5,5	6.000	200	Δ 220-380 Y	14 / 8,2	21,5	
ARFM.4K-L2	5,5 / 7,5	12.000	400	380 Δ	12	21,5	
ARFM.4K-L3	7,5 / 10	18.000	300	Δ 220-380 Y	26,5 / 15,5	21,5	
ARFM.4K-L4	2,2 / 3	3.000	50	Δ 220-380 Y	7,80 / 4,50	21,5	

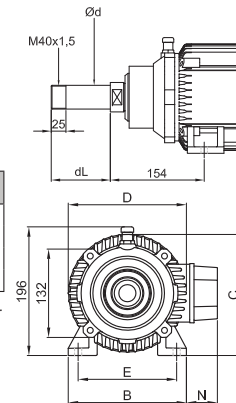


ARFM.6Y SPINDLES



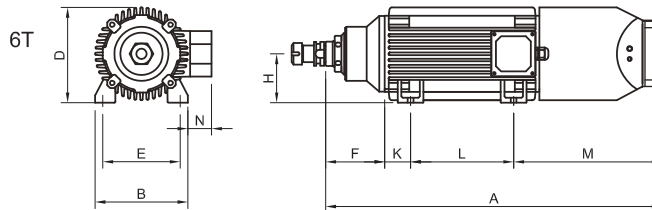
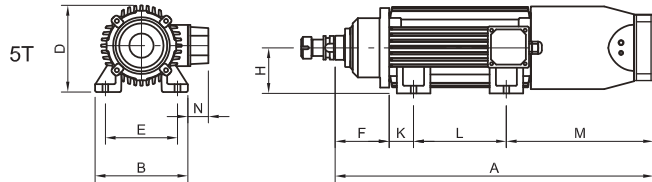
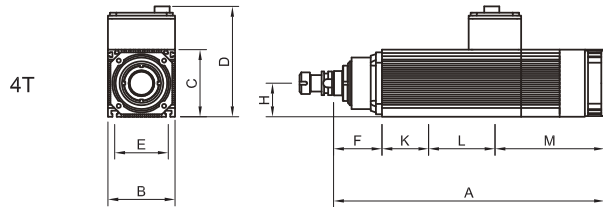
TYPE	A mm	B mm	C mm	D mm	E mm	F mm	H mm	K mm	L mm	M mm	Ød mm	ØdL mm	S mm
ARFM.6Y-L	554	183	185	180	150	84	95	50	200	128	47	40	100

TYPE	KW / HP	Rpm	H _z	Volt	Amper	Kg.	COLLETS
ARFM.6Y-L1	9 / 12	6.000	200	380 Δ	20	50	ER 32 1 - 20 mm
ARFM.6Y-L2	12,5 / 17	12.000	400	380 Δ	26	50	
ARFM.6Y-L4	6 / 8	3.000	50	Δ 220-380 Y	18 / 10,5	50	ER 40 2 - 26 mm
ARFM.6Y-L5	3,5 / 4,75	1.500	50	Δ 220-380 Y	10,7 / 6,2	50	



Possible to produce with electric fan or liquid cooled as optional.

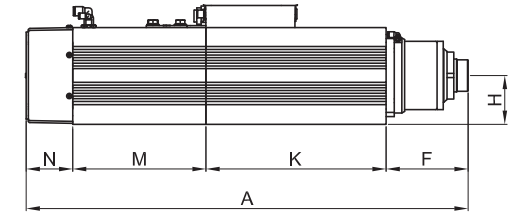
ARFM AUTOMATIC TOOL CHANGE SPINDLES (ATC)



TYPE	A mm	B mm	C mm	D mm	E mm	F mm	H mm	K mm	L mm	M mm	N mm
ARFM.4T-S	438,5	130	130	210	104	95	65	M6 KANAL / T SLOT			
ARFM.4T-M	488,5	130	130	210	104	95	65	M6 KANAL / T SLOT			
ARFM.4T-L	528,5	130	130	210	104	95	65	M6 KANAL / T SLOT			
ARFM.5T-L	618	176	-	168	140	105	88	47	180	286	40
ARFM.6T-L	655	183	-	185	150	115	95	50	200	290	46

TYPE	KW / HP	Rpm	Hz.	Volt	Amper	Kg.	COLLETS
ARFM.4T-S2	3/4	12.000	200	Δ 220-380 Y	10,4 / 6	20,5	SK 30 ATC
ARFM.4T-S3	4 / 5,5	18.000	300	Δ 220-380 Y	14 / 8,2	20,5	
ARFM.4T-M2	4 / 5,5	12.000	200	Δ 220-380 Y	14 / 8,2	24,5	
ARFM.4T-M3	5,5 / 7,5	18.000	300	Δ 220-380 Y	21 / 12	24,5	
ARFM.4T-L2	5,5 / 7,5	12.000	400	380 Δ	12	27,5	
ARFM.4T-L3	7,5 / 10	18.000	300	Δ 220-380 Y	26,5 / 15,5	27,5	
ARFM.5T-L1	6 / 8	6.000	200	Δ 220-380 Y	22,5 / 13	44	SK 30 ATC BT 40 ATC
ARFM.5T-L2	9 / 12	12.000	400	380 Δ	17	44	
ARFM.6T-L1	9 / 12	6.000	200	380 Δ	20	54	
ARFM.6T-L2	12,5 / 17	12.000	400	380 Δ	26	54	

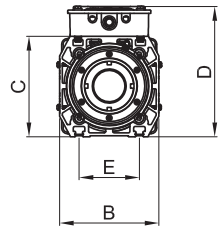
ARES AUTOMATIC TOOL CHANGE SPINDLES (ATC)



TYPE	A mm	B mm	C mm	D mm	E mm	F mm	H mm	K mm	M mm	N mm
ARES S(1)	556	140	141,5	184	85	120	71,5	M6 KANAL / T SLOT	195	68
ARES M(2)	606	140	141,5	184	85	120	71,5	M6 KANAL / T SLOT	195	68
ARES L(3)	646	140	141,5	184	85	120	71,5	M6 KANAL / T SLOT	195	68

TYPE	KW / HP	Rpm	Hz.	Volt	Amper	Kg.	COLLETS
ARES - 301	2,2 / 3	3.000	50	380 Y	4,5	30,8	SK 30 ATC
ARES - 311	4 / 5,5	6.000	200	380 Y	10	30,8	
ARES - 321	5,5 / 7,5	12.000	400	380 Δ	12	30,8	
ARES - 331	7,5 / 10	18.000	300	380 Y	15,5	30,8	
ARES - 341	9 / 12	24.000	400	380 Y	18,5	30,8	

Possible to produce with electric fan or liquid cooled as optional.



ARFM MANUAL SPINDLE WITH ELECTRIC FAN

All ARFM.3K and ARES series spindles can be produced with electric fan



ARFM.3K



ARES

ARFM LIQUID COOLED SPINDLES

All ARFM.3K, ARES and ARFM.6Y series spindles can be produced with liquid cooled



ARFM.3K



ARES



ARFM.6Y