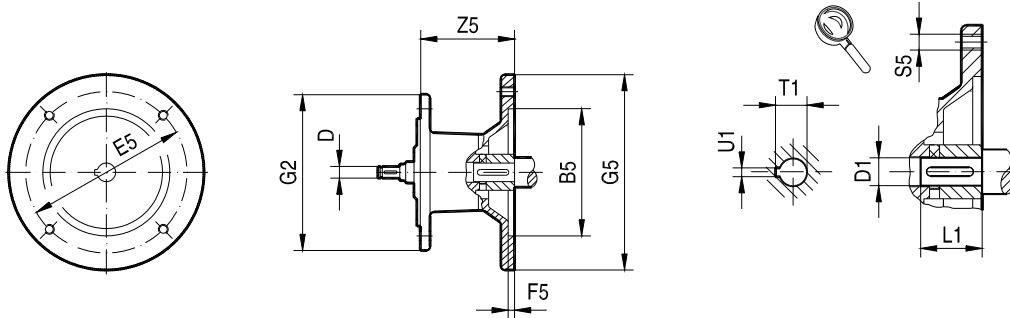


7.8 Adapters for mounting IEC motors

23 002 100



7

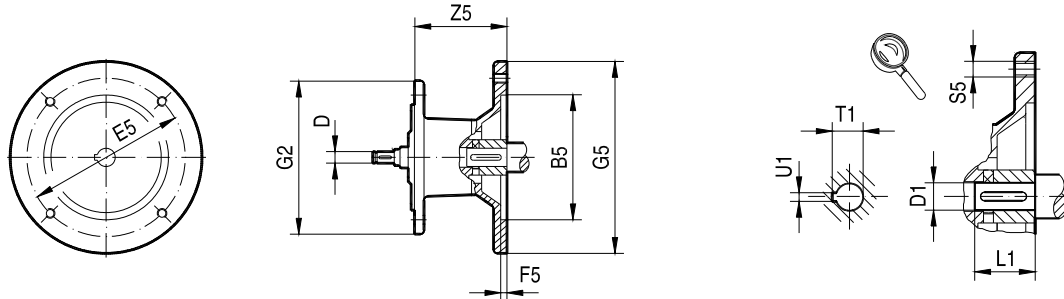
Gear unit type	Adapter type	Dimensions in mm												
		B5	D	E5	F5	G2	G5	S5	Z5	D1	L1	T1	U1	
R..27, R..37 F..27, F..37, F..47 K..37 S..37, S..47, S..57 W..37	AM63	95	10	115	3.5	120	140	M8	72	11	23	12.8	4	
	AM71 <sup>1)</sup>	110		130	4		160				14	30	16.3	5
	AM80 <sup>1)</sup>	130	12	165	4.5		200	M10		19	40	21.8	6	
	AM90 <sup>1)</sup>		14							24	50	27.3	8	
R..47 <sup>2)</sup> , R..57, R..67 F..57, F..67 K..47 <sup>2)</sup> , K..57, K..67 S..67 W..47	AM63	95	10	115	3.5	160	140	M8	66	11	23	12.8	4	
	AM71	110		130	4		160				14	30	16.3	5
	AM80	130	12	165	4.5		200	M10		19	40	21.8	6	
	AM90		14							24	50	27.3	8	
	AM100 <sup>1)</sup>	180	16	215	5		250	M12		134	28	60	31.3	8
	AM112 <sup>1)</sup>		18							191	38	80	41.3	10
AM132S/M <sup>1)</sup>	230	22	265		300									
R..77 F..77 K..77 S..77	AM63	95	10	115	3.5	200	140	M8	60	11	23	12.8	4	
	AM71	110		130	4		160				14	30	16.3	5
	AM80	130	12	165	4.5		200	M10		19	40	21.8	6	
	AM90		14							24	50	27.3	8	
	AM100 <sup>1)</sup>	180	16	215	5		250	M12		126	28	60	31.3	8
	AM112 <sup>1)</sup>		18							179	38	80	41.3	10
AM132S/M <sup>1)</sup>	230	22	265		300									
AM132ML <sup>1)</sup>		28												
R..87 F..87 K..87 S..87 <sup>3)</sup>	AM80	130	12	165	4.5	250	200	M10	87	19	40	21.8	6	
	AM90		14							24	50	27.3	8	
	AM100	180	16	215	5		250	M12		121	28	60	31.3	8
	AM112		18											
	AM132S/M	230	22	265			300			174	38	80	41.3	10
	AM132ML		28											
AM160 <sup>1)</sup>	250	28	300	6	350	M16	232	42	110	45.3	12			
AM180 <sup>1)</sup>		32										48	51.8	14

- 1) dimension 1/2 must be checked because component may protrude past foot-mounting surface if installed on R, K, S or W foot-mounted gear unit.
- 2) not with AM112
- 3) not with AM180

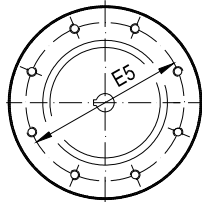


23 003 100

**Fig.1**

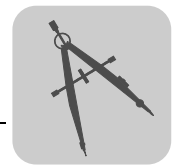


**Fig.2**



Gear unit type	Adapter type	Fig.	Dimensions in mm													
			B5	D	E5	F5	G2	G5	S5	Z5	D1	L1	T1	U1		
R..97 F..97 K..97 S..97 <sup>1)</sup>	AM100	1	180	16	215	5	300	250	M12	116	28	60	31.3	8		
	AM112			18												
	AM132S/M		230	22	265											
	AM132ML			28												
	AM160		250	28	300			6		350	M16	227	42	110	45.3	12
	AM180			32									48		51.8	14
	AM200		300	38	350			7		400		268	55	59.3	16	
R..107 F..107 K..107	AM100	1	180	16	215	5	350	250	M12	110		28	60	31.3	8	
	AM112			18												
	AM132S/M		230	22	265											
	AM132ML			28												
	AM160		250	28	300			6		350	M16	221	42	110	45.3	12
	AM180			32									48		51.8	14
	AM200		300	38	350			7		400		262	55	59.3	16	
	AM225		350	38	400			7		450		277	60	140	64.4	18
R..137	AM132S/M	1	230	22	265	5	400	300	M12	156		38	80	41.3	10	
	AM132ML			28												
	AM160		250	28	300			6		350		M16	214	42	110	45.3
	AM180			32							48			51.8		14
	AM200		300	38	350			7		400	255		55	59.3	16	
	AM225		350	38	400			7		450	270		60	140	64.4	18

1) Not with AM200



23 004 100

Fig.1

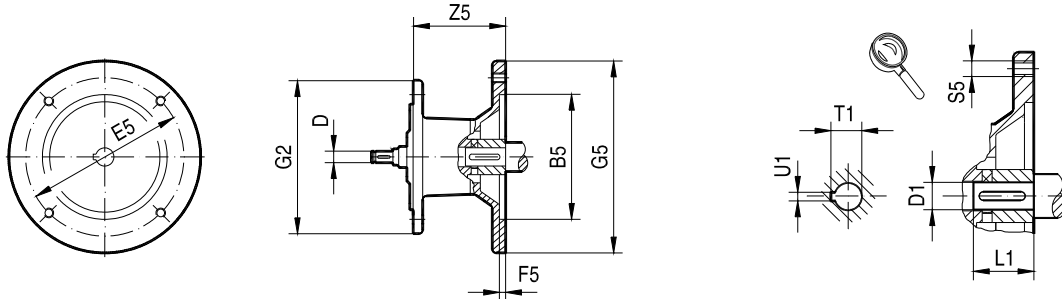
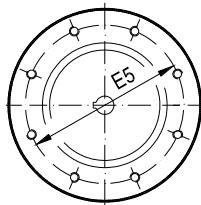


Fig.2



7

Gear unit type	Adapter type	Fig.	Dimensions in mm											
			B5	D	E5	F5	G2	G5	S5	Z5	D1	L1	T1	U1
R..147 F..127 K..127	AM132S/M	1	230	22	265	5	450	300	M12	148	38	80	41.3	10
	AM132ML			28							38			
	AM160	250	28	300	6	350		206	42	110	45.3	12		
	AM180		32						48		51.8			
	AM200	300	38	350	7	400		247	55	140	59.3	16		
	AM225		350						38		400		60	64.4
	AM250	450	48	500	7	550		336	65	140	69.4	18		
	AM280								75		79.9			
R..167 F..157 K..157 K..167 K..187	AM160	1	250	28	300	6	550	350	M16	198	42	110	45.3	12
	AM180			32							48			
	AM200	300	38	350	7	400		239	55	140	59.3	16		
	AM225		350						38		400		60	64.4
	AM250	450	48	500	7	550		328	65	140	69.4	18		
	AM280								75		79.9			